

# General Guide to upgrading Athena based devices to the AP 4.0 ROM

Please follow these instructions carefully or you could Brick your device.

## Section 1. Preparation & Flashing AP4.0 ROM:

### **-Pre-Flashing Steps:**

**\*\*\*Important Note, Always use the same USB port, otherwise repeat the driver install procedure\*\*\***

1. Be sure to Charge your battery to 100% (No Less than 75%)
2. Be sure the Windows based host PC has MS .Net 2.0 framework or higher, if not you will need to install prior to any attempt to use this utility to flash AP 4.0 on your Athena/Ameo/x75xx
3. Remove your SIM card and any Mini-SD Cards
4. As a precaution you should disable any antivirus programs running on the Host PC (System you have the Athena connected to)
5. You should have at least radio version 1.50.00 if you don't please update this prior to installing AP4 (there is no radio included in the package and your Athena may not work properly if this is not done, See this thread <http://forum.xda-developers.com/showthread.php?t=372904> )
6. Please perform a full hard reset before flashing (Volume down + reset) complete device setup or it may not connect properly
7. Connect your Athena to host PC via USB and wait for the device to fully connect.

**\*\*\*Important Note, Always use the same USB port, otherwise repeat the driver install procedure\*\*\***

***\*\*This procedure will force Windows to install the driver to support communication with the Athena while it is in Boot Loader Mode later in the process\*\****

- a. Enter the bootloader 3 Color Screen (camera button \*pressed as far as it will go\* + reset). Wait 1 to 2 minutes, if no driver dialogue pops up; please go to the next step. Most windows PC's will need to install a driver that supports communication between the PC and Device in Bootloader mode. This driver is critical to a successful installation of the AP4.0 Update.



**You should never have any reason to manually enter the boot loader during the remaining procedures unless troubleshooting and directed to do so by an AP Team member.**

**\*\*\*Important Note, Always use the same USB port, otherwise repeat the driver install procedure\*\*\***

8. Perform a soft reset and let the device Boot normally to Windows Mobile. (Follow any prompts to get to a normal state)
9. Connect the Athena and wait for WMDC or ActiveSync to fully connect, be sure no apps like MyMobiler or anything that uses ActiveSync are running.
10. Wait for all sync processes to complete. If it is not included in the downloaded update package please download the "enablerapi.cab" from <http://forum.xda-developers.com/showthread.php?t=300592> copy to your device and install. (this will help writing the new spl to the device)
11. Please un-rar the AP4 archive file.

***\*\*Warning!! Once you begin the flashing process, You must allow it to complete or your Athena may become fully or partially unusable\*\* The only exception is if the flasher aborts on it's own. Also note that the device will enter "Boot Loader" mode when it is needed as part of the flashing process, if for***

**some reason the device enters "Boot Loader" at a time when you do not expect it, please wait for the process to complete or you receive the "Boot Loader Error" screen noted below.**

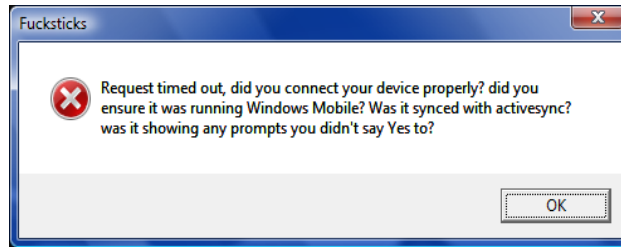
**-Flashing the AP 4.0**

**Vista Note 1. In all versions of Vista this application must be "Run as Administrator"**

**Vista Note 2. Also in Vista Click "Allow the program to run" if prompted.**

- 12. Launch the exe and wait, do not launch a second time (this can cause an error).
  - a. Please wait while RUU opens (this may take up to 10 minutes, depending on your PC).
  - b. Please carefully Follow all on-screen instructions and steps.

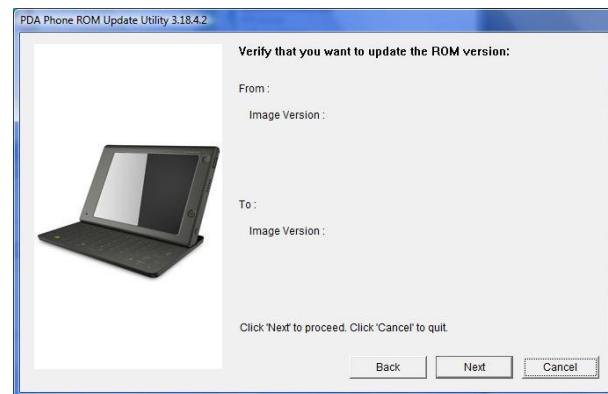
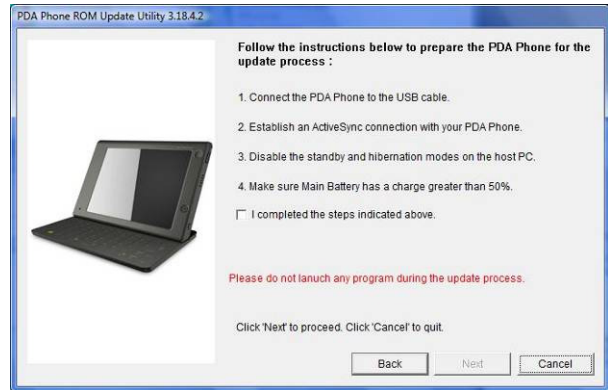
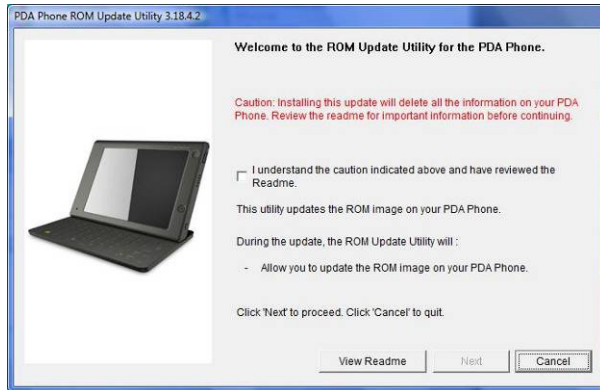
**\*\*NOTE\*\* "Bootloader Error"** if you receive the following error screen you have attempted to run the flash update with your device in "Boot Loader Mode" please reset the Athena to "Normal Windows Mobile Mode" and repeat step 12 after the Athena has fully connected to the PC is seen by the WMDC/Active Sync.

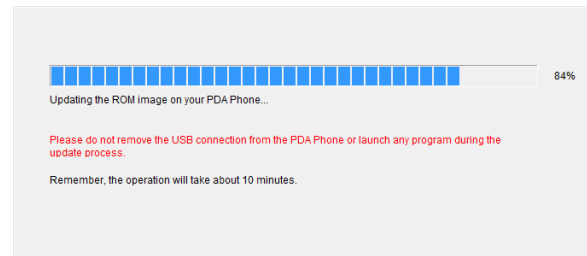
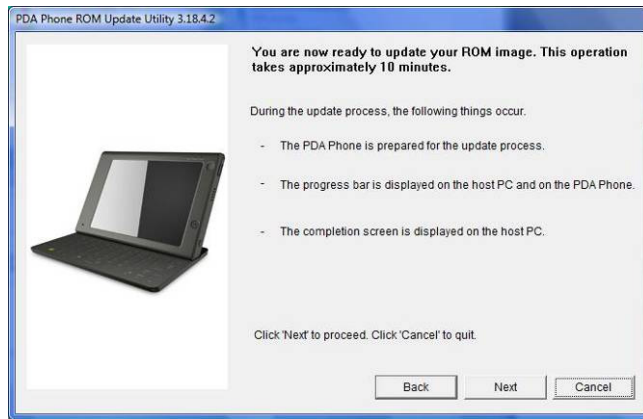


\*\*\*\*\* You may or may not get the following step, it is Critical if you get it \*\*\*\*\*

Be sure to tap "Yes" to both items on the device if prompted to "allow enter bootloader" & "Second Prompt", this will help the flashing of the New SPL. **(Without a successful flashing of the new spl you will likely Brick your device)**

- 13. The flash process should begin (The device will be set into "Bootloader Mode" automatically) and progress will be indicated by a status bar on both PC & Athena,
- 14. When the flash process is complete the device should reboot, for good measure please perform a Hard Reset (Volume down + reset).





### **Post Flash Housekeeping:**

- a. Follow normal device setup procedures (Extended ROM customizations will run \*\*Note it is normal for this ROM version to not require a device reboot after the customizations run\*\*)
- b. Re-insert SIM card and enable the phone in "Comm Manager" Carrier detect & auto setup should run, (device will reboot)
- c. Re-insert any external storage and sync device.

Please see the [AP4 Wiki](#) for helpful information on this release.

[http://wiki.xda-developers.com/index.php?pagename=HTC Athena AP4 FAQ](http://wiki.xda-developers.com/index.php?pagename=HTC_Athena_AP4_FAQ)

### **Section 2. Troubleshooting:**

1. **-Non booting OS on device:** you should be able to safely re-flash back to AP3 version ROM.
2. **-Wi-Fi not working:** Please post in the Athena Forum and one of the team will help you fix it.
3. **-Radio function does not work:** Please verify Radio version is 1.50.00 or higher, if not please flash radio 1.50.00 or higher. The 1.57.00 radio can be found in this thread <http://forum.xda-developers.com/showthread.php?t=372904>
4. **RealVGA Issues:** There is a compatibility issue with the RealVGA in AP4.0 and the German language pack. Please check the forum for a possible fix for this.
5. **-If a 2nd flash attempt has failed:** Place the device in bootloader, verify the SPL is 3.20 or above.
  - a. Please document the SPL version for troubleshooting.
  - b. Check the forums for possible solutions, or ask for assistance in the appropriate thread.

**You should now have a working Athena with the AP 4.0 ROM. Enjoy!!**